

# Storyteller

EITELJORG MUSEUM MAGAZINE

Eiteljorg Museum of  
American Indians and Western Art  
Telling Amazing Stories  
SPRING 2021

## *Honoring Women*

**HARD TWIST:  
WESTERN RANCH WOMEN -  
PHOTOGRAPHS BY BARBARA  
VAN CLEVE**

JAN 30-APR 25, 2021

**POWERFUL WOMEN:  
CONTEMPORARY ART FROM  
THE EITELJORG COLLECTION**

FIRST ROTATION:  
THROUGH MARCH 21, 2021

SECOND ROTATION:  
APRIL 17-OCT 3, 2021

P2



**LAUGHTER AND  
RESILIENCE:  
HUMOR IN NATIVE  
AMERICAN ART**

MAY 22-AUG 8, 2021

P6

**EITELJORG LAUNCHES  
RELIGION AND THE  
AMERICAN WEST**

Inside front cover

**AFRICAN AMERICAN  
HISTORY COMMEMORATED  
IN EVENTS AND ART**

P5, P8

**SCOTT SHOEMAKER'S  
CULTURAL CONTRIBUTIONS**

P12



# Eiteljorg

## Storyteller

Eiteljorg Museum Magazine

**Winner of the Award of Honor from the Public Relations Society of America — Hoosier Chapter in 2019 and 2020**

Volume 16, Number 1

### President and CEO

John Vanausdall

### Vice President for Advancement

Nataly Lowder

### Director of Marketing and Communications

Bert Beiswanger

### Editor and Writer

Bryan Corbin

### Design

Honeymoon Image & Design

### Contributing Writers

Kay Hinds

Elisa Phelps

Dorene Red Cloud (Oglala Lakota)

Johanna M. Blume

Nataly Lowder

Lezlie Laxton

Sophia Holt-Wilson

### Contributing Photographers

Eiteljorg Museum marketing staff, interns and archives

Addison Doty, courtesy of the Wheelwright Museum of the American Indian

National Cowgirl Museum and Hall of Fame

Hadley Fruits Photography

Wes Studi image courtesy of Jen Boyer

Dean Mitchell image courtesy of the artist

Brittany Erwin Photography

### Membership Questions

Call 317.275.1360

### Editor's Note

Every effort is made to ensure that exhibition images published in *Storyteller* magazine accurately reflect the artworks on exhibit at the Eiteljorg Museum during the dates announced and promoted. Due to state and local public health requirements, details of announced events and exhibitions might change too late for the *Storyteller's* publication deadlines. For comments or questions, call (317) 275-1315 or email bcorbin@eiteljorg.com.



## Eiteljorg's Religion and the American West project supported by \$2.5M Lilly Endowment Inc. grant

By Bryan Corbin, *Storyteller* magazine editor

Religion and spirituality throughout the American West and Native America will be the focus of significant future exhibitions and programs at the Eiteljorg Museum, thanks to a \$2.5 million grant from Lilly Endowment Inc. announced in December.

Part of Lilly Endowment's Religion and Cultural Institutions Initiative, the grant will support the Eiteljorg Museum's exploration of religion in a holistic, thoughtful and ongoing manner, through art, educational and scholarly programs and a new museum endowment. Among its components:

- The museum will incorporate the relationship of Native peoples to religion and spiritual beliefs into the planned renovation and reinstallation of the Eiteljorg's Native American galleries, scheduled for 2022.
- The Eiteljorg will partner with the New-York Historical Society to showcase an exhibit, *Acts of Faith: Religion and the American West*, in 2024, and will take the lead in producing a companion publication.
- With the Clements Center for Southwestern Studies at Southern Methodist University in Dallas, the Eiteljorg will co-sponsor a symposium in 2024 on Religion and the American West.
- A new endowment will be created to make religion a core element of the museum's work. That endowment will fund a new position on the Eiteljorg staff to oversee religion- and



José Rafael Aragón (Colonial Spanish American santero, ca. 1796-1862) *San Jose Retablo*, ca. 1830-1840 Ponderosa pine board, water-based paints, hide

Museum purchase with funds provided by the Brian and Kim Buchanan Foundation, a fund of the Legacy Fund

culture-related initiatives including: coordinating the *Acts of Faith* exhibition and producing the associated publication, participating in aspects of the Native American galleries reinstallation, researching and writing about aspects of the collection and religion in the American West, and developing future exhibits and programs.

"Although religion and spirituality have been a component of the Eiteljorg Museum's collections, exhibitions and programs, this generous Lilly Endowment grant will allow us to be more purposeful about it and to develop a leadership role in the museum field nationally. This initiative will significantly expand the museum's impact, and we are

grateful for Lilly Endowment's support," Eiteljorg President and CEO John Vanausdall said.

"The Religion and Cultural Institutions Initiative grant will serve as a catalyst for exploring the role religion and spirituality have played in the American West and the lives of Native peoples and other groups," Eiteljorg Vice President and Chief Curatorial Officer Elisa Phelps said. "Individual perspectives and community stories will be important elements as the Eiteljorg prepares for the reinstallation of its Native American galleries in 2022, the exhibition and symposium in 2024, and beyond. This ongoing project will enhance our interpretation and contextualization of artworks and cultural objects associated with faith and belief systems in our museum collections, and create fascinating visitor experiences and scholarship for years to come."

Lilly Endowment's Religion and Cultural Institutions Initiative is designed to foster public understanding about religion and celebrate the contributions that people of all faiths and diverse religious communities make toward greater civic well-being. The Eiteljorg thanks Jessica Ciales, Ph.D., coordinator of the museum's Religion and the American West planning project, who helped develop the museum's proposal and worked on the grant application. Visit [Eiteljorg.org](http://Eiteljorg.org) and the museum's social media for details of the upcoming exhibitions and event dates.

### On the cover:

Melody Harding, *Bar Cross Ranch*, WY

Photograph, 37" x 27", ©1995 Barbara Van Cleve

*Hard Twist: Western Ranch Women* by Barbara Van Cleve from the collection of the National Cowgirl Museum and Hall of Fame, Fort Worth, Texas

Susan Folwell (Santa Clara Pueblo, born 1970)

*Curiosity*, 2012

Clay, paint, cork

Gift of Steve and Jane Marmon, 2017.5.10

## 2021 shaping up as a year of exciting new projects at museum

Friends,

We often hear the phrase “the new normal” these days. While we have put the most difficult and unusual year in the museum’s history behind us, the previous routines of life might not return right away. I am confident, however, that a sense of normalcy will be here by the end of 2021.

When I joined the Eiteljorg nearly 25 years ago, it never occurred to us that face masks and social distancing someday would be part of the museum experience for guests, staff and volunteers. The dramatic events thrust upon us last year — closing the museum for three months, postponing the 2020 Indian Market and Festival, switching to all-virtual formats for *Quest for the West*<sup>®</sup> and *Día de Muertos* and all the other changes — would have seemed inconceivable in the pre-pandemic era.

We endured all of it together, and learned much from the experience, and the resilience of the Eiteljorg gives us continued optimism for the future.

First, I am grateful for supporters who helped the Eiteljorg get through 2020 and into 2021. Also, I want to thank the museum staff and volunteers who made two of our recently concluded

exhibitions so memorable for visitors: *Quilts: Uncovering Women’s Stories* and *Please Touch! The Sculptures of Michael Naranjo*. And, the 11th annual *Jingle Rails: The Great Western Adventure* brought joy to many as we closed out the year. We especially want to thank the *Jingle Rails* volunteers, such as the “train guys,” who devoted many hours to ensuring the model railroad ran smoothly.

Late in 2020, we received wonderful news: Lilly Endowment Inc. awarded a \$2.5 million grant from its Religion and Cultural Institutions Initiative to the Eiteljorg. The grant will support exhibitions and programs exploring religion and spirituality in the American West and Native America. As you will read on the facing page, it’s hard to overstate how important this initiative is to the Eiteljorg and the museum field in general, and we look forward to developing this project and sharing it with visitors in 2022 and beyond.

The Eiteljorg always has had a strong focus on cultural diversity, and that means we support those working even harder to end racism and systemic racial injustice in our nation. Through our Leon Jett Memorial Lecture, Juneteenth Community Celebration and

other multicultural programming during the year that honors the contributions of African Americans, we hope to be part of the important dialogue in our community toward ensuring justice. As you will read on page 5, the museum recently acquired a Dean Mitchell painting, *For Freedom*, celebrating African American history and heritage.

Looking ahead, we are excited to partner with two other museums to host traveling exhibitions this spring. *Hard Twist: Western Ranch Women – Photographs by Barbara Van Cleve* is on loan from the National Cowgirl Museum and Hall of Fame in Fort Worth, Texas; it opened Jan. 30. *Laughter and Resilience: Humor in Native American Art* is on loan from the Wheelwright Museum of American Indians in Santa Fe, N.M.; it opens May 22. You will want to experience these fascinating shows.

As we continue to adapt to the pandemic and rollout of vaccinations, the Eiteljorg is preparing exhibitions and programming, including a virtual 2021 Indian Market and Festival, the 2021 *Quest for the West*<sup>®</sup> Art Show and Sale and the next round of the Eiteljorg Contemporary Art Fellowship. We encourage educators to hang in there: The Eiteljorg is still here for you and can provide virtual field trips and educational opportunities thanks to our phenomenal group of dedicated volunteer guides. We also congratulate Alisa Nordholt-Dean, who was recently promoted to vice president for public programs and Beeler Family director of education.

On a bittersweet note, I want to thank several people who made an enormous difference at the Eiteljorg

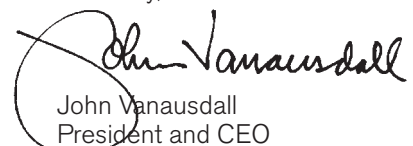


John Vanausdall

and are now moving on. Scott Shoemaker, Ph.D., the Thomas G. and Susan C. Hoback curator of Native American art, history and culture, brought an important Native American perspective to the museum both from a professional and academic point of view and from personal experience. Susan Lewis, who is retiring soon as vice president of administration and chief financial officer, has done tremendous work in ensuring the museum’s finances are in order for the past 23 years. Hyacinth Rucker energetically managed our online and social media presence, and Cassandra Sanborn enthusiastically led our membership program. Mary Whistler worked hard organizing events such as Cowpokes and Cocktails and receptions for *Quest for the West*<sup>®</sup>, the Eiteljorg Fellowship and the Agave young professionals program. We will miss all these colleagues.

Despite the difficulties of the past year, we have much to be thankful for and much to look forward to, and we hope to see you very soon. If there is to be a “new normal,” let it be one filled with gratitude, optimism and understanding.

Sincerely,

  
John Vanausdall  
President and CEO  
Eiteljorg Museum



Ernest Leonard Blumenschein (American, 1874-1960)  
*The Penitentes*, ca. 1935, oil on linen  
Gift of Harrison Eiteljorg

See story on the facing page.

# Eiteljorg's Year of Honoring Women Continues

By Elisa Phelps, Eiteljorg vice president and chief curatorial officer

The term “hard twist” is used in association with yarn and thread. A hard twist yarn is one that has been twisted very tightly in the spinning process. The tightness of the twist gives it strength and flexibility. The same term can be used for rope, in particular manila lariat rope, made from the fibers of the abaca, which is a member of the banana family grown primarily in the Philippines. Just like yarn, the manila fiber has been tightly twisted — hard twisted — to make rope, which brings us to the Eiteljorg's new exhibit **Hard Twist: Western Ranch Women – Photographs by Barbara Van Cleve**.

*Hard Twist* as a title is appropriate in the context of Western ranch women who are tough, strong and flexible — like lariat rope. The striking black-and-white images captured by photographer (and Montana rancher) Barbara Van Cleve are accompanied by several objects from the collection of the National Cowgirl Museum and Hall of Fame in Fort Worth, Texas, which is also the organizer of the photography exhibit. The public will have an exciting opportunity to hear from Van Cleve about her work and life on the ranch, during a virtual talk March 13 at [Eiteljorg.org](http://Eiteljorg.org).

Objects in the *Hard Twist* exhibit that opened Jan. 30 were owned and used by four of the ranch women depicted in the photos. Their stories are equally fascinating.



*Fern Sawyer, Richuela Ranch, NM - Heading a Calf at her Spring Branding, 13" x 19.25" ©1988 Barbara Van Cleve*



*Fern Sawyer's closet*  
Courtesy of the National Cowgirl Museum and Hall of Fame

*Hard Twist: Western Ranch Women* by Barbara Van Cleve from the collection of the National Cowgirl Museum and Hall of Fame, Fort Worth, Texas

## Cowgirl spirit

Ruby Gobble and Gretchen Sammis worked the Chase Ranch in New Mexico together for almost 50 years, with Gretchen as owner and Ruby as foreman. Both were accomplished horsewomen. Ruby grew up on a ranch in Arizona and learned to ride on desert burros at the age of three. She became a trick rider and, while still a teenager, a professional roper, winning multiple titles as World's Champion Team Roper. Gretchen's great-grandparents founded the Chase Ranch near Cimarron, New Mexico, in 1869. Gretchen was born on the ranch and owned and operated it for 58 years. She planned that, after her death, her property would become a place to educate young people about ranching. In 2013, the Chase Ranch Foundation and the Boy Scouts of America signed an agreement for the ranch to be managed by the Philmont Scout Ranch, which continues to run Gretchen's favored Hereford cattle and provides educational programs for young people and ranch visitors.

Fern Sawyer was also a New Mexico rancher and accomplished horsewoman. The holder of many “firsts”, her accomplishments include being the first woman to win the cutting horse competition at the Fort Worth Rodeo, first director of the Girls Rodeo

*(Continued on page 4)*



*Star Shower*, 26.5" x 37" ©1993 Barbara Van Cleve



*Farr Cattle Company*, 26" x 38.25"  
©1993 Barbara Van Cleve



Image courtesy of Hadley Fruits Photography

**HARD TWIST: WESTERN RANCH  
WOMEN — PHOTOGRAPHS BY  
BARBARA VAN CLEVE**

**JAN 30–APR 25**

**#EJHardTwist**

Join us for virtual talks and programming events related to *Honoring Women* exhibitions. See pages 8-9, and visit [www.eiteljorg.org/calendar](http://www.eiteljorg.org/calendar) for details.



*Tough Traveling*, 29" x 19.5" ©1988 Barbara Van Cleve  
*Hard Twist: Western Ranch Women* by Barbara Van Cleve from the collection of the National Cowgirl Museum and Hall of Fame, Fort Worth, Texas

(Continued from page 3)

Association which became the Women's Professional Rodeo Association, and first woman inducted into the American Cutting Horse Association Hall of Fame. Fern was known for her flamboyant wardrobe which featured spandex, gold leather, shiny satin and spangled Western suits; custom boots in a rainbow of colors and styles, many with her name or brand featured on them; and her Cadillac with custom "Fern" license plates. She literally died in the saddle, having suffered a heart attack as she rode out of the arena during filming for a 1996 PBS documentary *Just for the Ride*.

World Champion bareback bronc and bull rider Jan Youren says that she has broken so many bones it is easier for her to remember the ones she did not break during her career. Youren says, "Cowgirl spirit means having the guts to reach for it, whatever 'it' might be. It's going outside of the regular limits of what goes on around you, to reach for what you want to be and do what you want to do." She certainly did that, raising eight children of her own while winning multiple world championships in a rodeo career that lasted more than 50 years.

## Powerful Women

*Hard Twist* is part of our continuing celebration of *Honoring Women*, as is another exhibition, *Powerful Women*, which features contemporary art by Native women artists including Jaune Quick-to-See-Smith whose work was recently selected as the first piece of Native American art ever to be purchased by the National Gallery of Art. The exploration of powerful, strong and accomplished women in contemporary art is a subject that is too big and important for a single exhibit to do it justice. *Powerful Women II*, which opens on April 17, will feature work by diverse women artists including Anita Rodriguez, Allison Saar, Wendy Red Star and Hung Liu. About all these powerful women, Jennifer Complo McNutt, curator of contemporary art, says, "Each one of these women is celebrating, challenging or enlightening people to create a new perspective, a different perspective, while helping all individuals have a broader view of our world."



Kay Walking Stick (Cherokee Nation, born 1935)  
*Is This Me Variation VI*, 1989  
 Charcoal on paper  
 Museum purchase from the Eiteljorg Contemporary Art Fellowship

Anita Fields (Osage, born 1951)  
*Opposites Attract*, 2005, clay  
 Gift of Paul and Grace Markovits



## POWERFUL WOMEN: CONTEMPORARY ART FROM THE EITELJORG COLLECTION

First rotation, continues through

**MAR 21**

Second rotation, **APR 17 – OCT 3**

#EJPowerfulWomen

## Honoring Women

HONORING WOMEN IS SPONSORED BY:



*Hard Twist* receives additional support from **Roberts Camera**  
*Powerful Women II* is also sponsored by **AARP Indiana**





Dean Mitchell  
*For Freedom*, 2020  
 Watercolor  
 30 x 22 inches  
 Gift of Catherine Turner, 2020.6.1

## AFRICAN AMERICAN HISTORY EVENTS AT THE EITELJORG

### FEB 20

1 p.m. **Virtual Leon Jett Memorial Lecture with Walter Thompson-Hernandez**

### Starting the week of FEB 23

***Blacks in the West: the Story Behind the Art.***

View the prerecorded virtual tour at [www.eiteljorg.org](http://www.eiteljorg.org).

### JUN 5 & 19

**Juneteenth Community Celebration**

See pages 8-9 for details.

Learn about the Eiteljorg's diversity statement at [www.eiteljorg.org](http://www.eiteljorg.org).

## New Acquisition Spotlight: *For Freedom* by Dean Mitchell

By Johanna M. Blume, curator of Western art, history and culture

The Eiteljorg Museum is committed to sharing the stories of the many diverse communities who are part of the Western experience. This requires an inclusive approach that makes space for groups often missing from art of the American West. Over the last several years, the museum has prioritized collecting works by artists from underrepresented communities and works that depict underrepresented aspects of the American West.

An exciting recent acquisition from a donor, *For Freedom* by Dean Mitchell, is an important addition to the permanent collection. Despite the fact that African American settlers, soldiers and cowboys were a part of the historical American West, there are very few depictions of them in early Western art. This lack of representation is a contributing factor in their erasure from the history of the American West. It is also in part what inspired Dean Mitchell to create the piece. Through his work he is interested in honoring a history that he hadn't been taught, and honoring people who are overlooked by society.

Additionally, the subject of this piece is African American, a Union soldier. The model was a Civil War re-enactor at Fort Scott in Kansas. Kansas was the first state to recruit, train and deploy Black soldiers into combat in the Civil War, and Fort Scott was the home base for the First and Second Colored Infantry. The history of that war in the American West and the role of African American soldiers in the Civil War are subjects rarely tackled

in Western art, and completely unrepresented in the Eiteljorg's permanent collection. The addition of *For Freedom* to the collection enables the museum to share this piece of history with visitors.



Dean Mitchell  
 Image courtesy of the artist

Dean Mitchell is an extraordinarily talented watercolorist, and *For Freedom* is an example of his skill in that medium. With this piece he wanted to focus on the man, leaving the background abstract, and drawing the viewer in to the weariness of the soldier, "leaving nothing else around to entertain you except that he has a gun." The end goal is that the viewer has to "confront this man as a soldier and a human being."

*For Freedom* was one of Mitchell's artworks spotlighted in the Eiteljorg *Quest for the West*® Virtual Art Sale in September 2020. A collector who is a dedicated supporter of the Eiteljorg, Catherine Turner, purchased the painting and donated it to the museum.

New acquisitions such as *For Freedom* are an important step in expanding the museum's ability to interpret the full range of stories and experiences that make up the American West. This work is ongoing, and just one facet of the museum's commitment to fulfilling its mission.



Heidi Brandow, b.1981 (Diné/Kanaka Maoli), *Cute Monster Series*, 2015, mixed media, 10.25 inches x 24" inches  
Image by Addison Doty, courtesy of the Wheelwright Museum of the American Indian

# *Laughter and Resilience: Humor in Native American Art*

By Dorene Red Cloud (Oglala Lakota), assistant curator of Native American art

In May, the Eiteljorg will premiere a travelling exhibition from the Wheelwright Museum of the American Indian in Santa Fe, New Mexico, called *Laughter and Resilience: Humor in Native American Art*. The curatorial staff leapt at the opportunity to bring this exhibit to the Eiteljorg because of its focus on humor, which is often at the heart of Native art. I have worked at the Eiteljorg for a little more than four years, and I have had the privilege to work with both the renowned biennial Eiteljorg Contemporary Art Fellowship and our annual Indian Market and Festival, two programs that sponsor and promote Native artists. Sometimes these artists' works of art are serious, abstract and specific. An equally important thread woven into the work of our Native artist friends is their light-

heartedness, amusing comedy and quick wit.

*Laughter and Resilience* approaches Native humor by arranging the exhibited works into the following categories: Tricksters, Satire and Parody, Cartoons and Cartoonists, and Whimsy. These categories help unpack the concept of Native humor to a new audience. We are grateful to the Wheelwright Museum for graciously allowing us to add related works from the Eiteljorg collection to the exhibit.

Humor is a complex expression. Some of us respond to the critical wit from satirical movies. Others enjoy reading a favorite comic strip, or adding playful elements to their day-to-day lives. (See Heidi Brandow's *Cute Monster* for some true whimsy.)

When translating from different languages, cultural context can be absent or misinterpreted. For me, this is apparent in the word "trickster," one of the categories highlighted in *Laughter and Resilience*. "Trickster" evokes thoughts of a mischievous, shadowy figure that manipulates innocents in a parable or cautionary tale. In many Native cultures, however, the Trickster is not fictional, and instead, multi-faceted. Trickster can be Creator, Hero, a Trouble Maker, or all three. Coyote, Rabbit, Fox and Raven are common.

Trickster figures into many Native American and First Nations (of Canada) stories that are still relevant (and humorous) today. Trickster can be fun, silly and self-deprecating and yet serious, clever and boastful: One moment Trickster



is creating the world and teaching the people how to live, and in the next he is a prankster, warning us not to be too proud or vain or you might grow a second nose or something! Either way, Trickster is revered.

To laugh in the face of adversity requires strength of character. The past year seems to have tested everyone's resiliency, and humorous expressions — from cat memes, to late-night comedians — helped many of us get through. For Native peoples, repeating a joke or lovingly making fun of each other has been a characteristic that empowers us to be resilient despite difficult histories, moments and situations.

Santo Domingo Pueblo contemporary cartoonist Ricardo Caté has wicked deadpan humor. His cartoon, *Untitled (Santa Fe Coyote)*, features three coyotes in a desert scene: One coyote asks another about a third coyote that has a scarf tied around its neck and is howling towards a blue sky. The second coyote replies, "He's from Santa Fe." This trickster satirically comments on how a scarf is an iconic fashion statement among those from Santa Fe.

One way to poke fun at or satirize social behaviors and events is through parody. In this exhibit, you will see Hopi Koyola carvings from the Eiteljorg collections wearing silly outfits and making somewhat unsuitable gestures. To their community members, these Native American clowns are reminders of the types of inappropriate behavior to avoid, but communicated in a humorous way that makes their messages accessible.

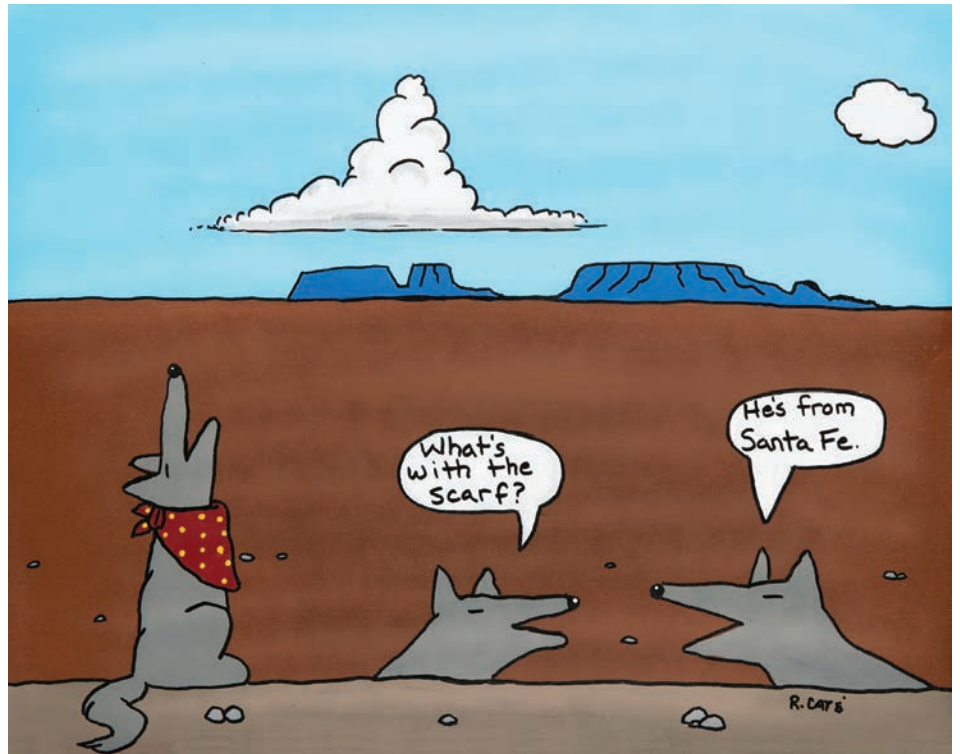
When visiting *Laughter and Resilience* and participating in its programming, expect to gain an insight into the creative minds of several Native artists who incorporate humor into their paintings, prints, photographs, silverwork, claywork and cartoons. And most importantly, expect to laugh!

**LAUGHTER AND RESILIENCE:  
HUMOR IN NATIVE AMERICAN ART  
MAY 22–AUG 8, 2021**

Organized by the Wheelwright Museum of the American Indian of Santa Fe, New Mexico, and featuring additional artworks from the collections of the Eiteljorg Museum.

#EJNativeHumor

CAPITAL GROUP



Ricardo Caté, b. 1964 (Santo Domingo Pueblo)  
*Untitled (Santa Fe Coyote)*  
Acrylic on canvas, 18 inches x 22 inches  
Image by Addison Doty, courtesy of the Wheelwright Museum of the American Indian



Marlin Pinto (Hopi / Zuni, born 1957)  
*Koshare, Bus Stop*, date unknown  
Cottonwood, paint  
Gift of R. Terrance and Rebecca J. Rader, 2005.32.80



Donald F. Montileaux (Oglala Sioux, born 1948)  
*Fast Food/Super Sized*, 2002, pencil, ink on paper  
Gift of Carole Leve Tavel, 2018.21.4

Visit [www.eiteljorg.org/calendar](http://www.eiteljorg.org/calendar) for details of public programs about *Laughter and Resilience*, such as virtual talks and tours.

# Calendar

We're adding new programs and events all the time. Visit [www.eiteljorg.org](http://www.eiteljorg.org) and sign up for our e-newsletter to stay up to date on Eiteljorg Museum happenings.

Museum hours are 10 a.m. to 5 p.m. Monday through Saturday, and noon to 5 p.m. Sunday. The Museum Cafe is open from 11 a.m. to 3 p.m. Monday through Saturday, and noon to 3 p.m. Sunday, with a limited menu.

**NOTE TO VISITORS:** The events and dates listed here were in effect at the time of publication. At different times, individual exhibits or a specific gallery may be temporarily closed for reinstallation or renovation, even as the museum remains open. Please check [www.eiteljorg.org](http://www.eiteljorg.org) before your visit for the most up-to-date information on exhibits and activities taking place at the museum on the day of your visit.

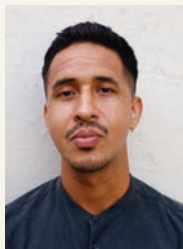
Saturday

**FEB 20**

1 p.m.

**VIRTUAL Leon Jett Memorial Lecture**

Los Angeles-based *New York Times* multi-media journalist and author Walter Thompson-Hernandez will speak about his recent book, *The Compton Cowboys*, a story of trauma and transformation, race and identity, compassion and belonging. Register at [www.eiteljorg.org](http://www.eiteljorg.org). The Leon Jett Memorial Lecture series honors the late former manager of public programs at the Eiteljorg who was known for his dedication to offering quality multi-cultural programs at the museum.



Saturday

**MAR 27**

2 p.m.

**VIRTUAL Class: Black & White Photography in a Color World**

Join Walter Kuhn of Roberts Camera and learn more about black-and-white photography, why its unique look remains relevant today, and what the future may hold for this important art form. Fee: \$10. Register at [www.eiteljorg.org](http://www.eiteljorg.org).



Friday

**APR 2**

Noon

**VIRTUAL Curator's Choice: Hard Twist: Photography as Art**

Jennifer Complo McNutt, curator of contemporary art, will give insight into photography as an art form through the work of Barbara Van Cleve. Visit [www.eiteljorg.org](http://www.eiteljorg.org) to register for this free program.

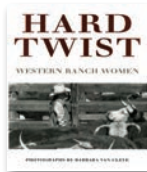
Saturday

**APR 17**

1:30-4 p.m.

**Film Photo Walk with Roberts Camera**

Want to get sentimental and shoot a roll of 35-mm film? Join Roberts Camera photographers for a photo walk along the downtown Canal. They will show you how to shoot film and get your exposure right for those memorable images. Don't have a film camera? No problem! Loaners will be available to borrow. A roll of film, processing and critical review are included in the cost of the class. More details at [www.eiteljorg.org](http://www.eiteljorg.org). Fee.



Saturday

**MAR 13**

1 p.m.

**Barbara Van Cleve VIRTUAL Talk**

Join us for a virtual discussion with photographer and rancher Barbara Van Cleve about her life photographing the West and the Eiteljorg's new exhibit of her work, *Hard Twist: Western Ranch Women*. Visit [www.eiteljorg.org](http://www.eiteljorg.org) for more details.

**Western Book Club**

The Western Book Club meets to discuss an array of titles spanning and sometimes pushing the limits of what constitutes a Western. Meetings will be via Zoom until further notice. To attend, contact [museumprograms@eiteljorg.com](mailto:museumprograms@eiteljorg.com).

Wednesday

**MAR 10**

5:30 p.m.

*All The Pretty Horses* by Cormac McCarthy (The Border Trilogy)

Wednesday

**MAY 12**

5:30 p.m.

*House Made of Dawn* by N. Scott Momaday

Starting the week of

**FEB 23**

**Blacks in the West: the Story Behind the Art**

Eiteljorg volunteer guide Gayle Cox highlights the contributions and all-too-often unknown stories of historical and contemporary Blacks in the American West through four pieces of art. View the prerecorded virtual tour beginning Feb. 23 at [www.eiteljorg.org](http://www.eiteljorg.org).

Friday

**MAR 5**

Noon

**VIRTUAL Curator's Choice: Hard Twist: Women in the West**

Join Johanna M. Blume, curator of Western art, history and culture, and learn more about roles women have taken on in the American West. Visit [www.eiteljorg.org](http://www.eiteljorg.org) to register for this free program.

Friday

**MAY 7**

Noon

**VIRTUAL Curator's Choice: Powerful Women II**

Join Jennifer Complo McNutt, curator of contemporary art, for a look at *Powerful Women II: Contemporary Art from the Eiteljorg Collection*. Visit [www.eiteljorg.org](http://www.eiteljorg.org) to register for this free program.

Friday

**JUN 4**

Noon

**VIRTUAL Curator's Choice: Laughter and Resilience: Humor in Native American Art**

Join Dorene Red Cloud (Oglala Lakota), assistant curator of Native American art, for a look at *Laughter and Resilience: Humor in Native American Art*. Register at [www.eiteljorg.org](http://www.eiteljorg.org).

Visit [www.eiteljorg.org](http://www.eiteljorg.org) for details or call 317.636.9378 to register or purchase event tickets. All events are included with general admission unless otherwise noted. General admission is \$15 for adults, \$12 for seniors 65 and over, and \$8 for youth ages 5 to 17 and college students with student ID. Children ages 4 and under are free. Museum members enjoy free admission, unless otherwise noted. Parking is free, when spaces are available, in the White River State Park underground garage for visitors to the museum, cafe or museum store.

## FEB/MAR/APR/MAY/JUN

### VIRTUAL Artist Talk Series

Visit with a new artist each month without leaving the comfort of your couch. Join us for virtual talks Feb. 24 with the music group **Pamyua** and March 24 with artist **Natalie Ball**, times TBD. More details about these and other monthly talks are coming soon at [www.eiteljorg.org](http://www.eiteljorg.org).

Saturday

### MAY 22

#### Exhibition Opening: *Laughter and Resilience: Humor in Native American Art*

Experience the laughter in Indigenous art. In this traveling exhibition of the Wheelwright Museum of the American Indian, Native artists past and present employ humor in a wide variety of ways, using a range of artistic media. It's open through Aug. 8. Check [www.eiteljorg.org/calendar](http://www.eiteljorg.org/calendar) for details of public programs and events.

Fredrick Cruz, b. 1961 (Tohono O'odham)  
*Untitled (Dog with Hat)*, ca. 2009

White and green yucca, devil's claw, and beargrass, 10.25 inches x 8.46 inches

Image by Addison Doty. Courtesy of the Wheelwright Museum of the American Indian.



Saturdays

### JUN 5 & 19

#### Juneteenth Community Celebration

The Eiteljorg Museum hosts an annual community commemoration of Juneteenth, marking the anniversary of the end of slavery and the arrival of freedom in Texas in 1865. Visit [www.eiteljorg.org](http://www.eiteljorg.org) for details of free in-person and virtual events on two dates.



### BEAUTIFUL NATIVE AMERICAN ART AND JEWELRY

The Eiteljorg Museum Store offers an outstanding selection of Native American jewelry and pottery, Western home décor and a wide selection of coffee table books, art catalogs and cookbooks. The store also can take orders online and ship merchandise.

#### STORE HOURS

MON-SAT: 10 a.m. to 5 p.m.

SUN: Noon to 5 p.m.

317.275.1300 | 800.878.7978

[store@eiteljorg.com](mailto:store@eiteljorg.com)

[@Eiteljorg.Store](https://twitter.com/Eiteljorg.Store)

## Honoring Women

### THROUGH MAR 21

#### *Powerful Women I: Contemporary Art from the Eiteljorg Collection*

The museum's exhibition *Powerful Women* highlights and celebrates diverse women artists in contemporary art. The first rotation of the exhibition honors and acknowledges the contributions of Native women artists to their communities, the contemporary Native art community and the art world in general.



### APR 17-OCT 3

#### *Powerful Women II: Contemporary Art from the Eiteljorg Collection*

The second rotation of the *Powerful Women* exhibition highlights a diverse group of women artists in contemporary art, featuring works by African American, Latino, Asian American and European American women contemporary artists.

### THROUGH APR 25

#### *Hard Twist: Western Ranch Women Photographs by Barbara Van Cleave*

This traveling exhibition of documentary-style photographs explores women's fascinating experiences in the West. *Hard Twist* has been described as a celebration of women of the range, their ranches and the breathtaking Western landscapes in which they live.

### THROUGH JUN 6

#### *Prints of Gene Kloss*

Visit the Eiteljorg's Myrta Pulliam Gallery of Photography for the second rotation of an exhibition of a collection of etching prints by prolific printmaker Gene Kloss, known for her etchings of landscapes and Southwestern subjects and Hopi culture.

Unknown photographer  
*Gene Kloss operating a printing press*  
Photograph

Image courtesy of Smithsonian Archives of American Art, Gene Kloss Papers, 1934-1941





## Answering your questions about supporting the museum during retirement

Still hunkering down as vaccines continue to arrive. Will we ever get on the other side of this pandemic? Yes! We might feel exhausted, beaten down, and weary... but we will get there... together.

In this edition of *A Note From Nataly*, I will answer more questions from our readers and supporters as they have come to the forefront.

### Q: "Did the required minimum distribution (RMD) age change from 70½ to 72?"

A: Yes. The Setting Every Community Up for Retirement Enhancement Act of 2019 changed the RMD age, but things became complicated in 2020, due to the pandemic. If you turned 70½ in 2019 you had to take your RMD by April 1, 2020. However, all RMDs, regardless of age, were suspended in 2020 as a way to help people in difficult times. If you turned 70½ in 2020 or later, you are now required to take your RMD by April 1 of the year after you reach 72. We will have to wait and see if RMDs are suspended again in 2021.

### Q: "Do I have to wait until 72 to donate through my retirement account?"

A: No. Known as a qualified charitable distribution (QCD), this age requirement did not change. After you turn 70½, you can donate to a nonprofit through your retirement account. Please consult with your financial advisor on how to do this, as the money must go straight from your financial institution to the nonprofit. When you turn 72, this QCD will reduce your taxable income from your RMD. A QCD is a wonderful way to help yourself and a nonprofit you are passionate about.

### Q: "Through this pandemic, I chose to update my will and estate plans. What next?"

A: The pandemic has affected us all in different ways. For some, it has been a time to reflect on the way in which they want their money to be used after they pass. People are realizing that regardless of the amount they leave behind, they want it to do something positive. At a time when everything has felt out of control, this is something you can control. If you have chosen to put the Eiteljorg Museum in your will or estate plans, please

contact me. I would enjoy having a conversation with you. We can work through your thoughts, and make sure the money is directed toward what you are most passionate about at the museum.

As more vaccines become available, the world will begin to open back up. Things will definitely look different. Some businesses will be gone; others will take their places. Some people will have lost loved ones and hopefully begin the process of healing. Sports and the performing arts will have an audience again.

One thing is certain; the Eiteljorg is here for you. Now and always.

2021 is going to be another tough year to work through... hang in there... We will get on the other side of this... together.

*Nataly*  
**Nataly Lowder**

Vice President for Advancement  
 317.275.1311  
[nlowder@eiteljorg.com](mailto:nlowder@eiteljorg.com)

Eiteljorg Museum  
 500 W. Washington St.  
 Indianapolis, IN 46204  
[www.eiteljorg.org](http://www.eiteljorg.org)

## Thank you to the following donors for memberships and gifts received from August 1–November 30, 2020.

Due to space limitations, only contributions of \$100 or more are listed — with the exception of gifts in honor or in memory. If your name is not listed as would like it to be, please accept our apologies and call 317.275.1311.

### Membership gifts (\$125 and above)

#### Vision Circle

\$25,000 or more annual cumulative giving  
 Michael and LouAnn Eagle  
 L.G. and Alyce Edwards  
 Steve and Jane Marmon

#### Chairperson's Circle

\$10,000-\$24,999 annual cumulative giving  
 Mary Beth and Robert Braitman  
 Angie and Dick Darlington  
 Roger and Mindy Eiteljorg  
 Kristine and Steven Isenberg  
 Henry and Louise Leander  
 Virginia Merkel  
 Charles and Peggy Sutphin

#### President's Society

\$5,000-\$9,999 annual cumulative giving  
 Dr. Caryn C. Anderson and Mr. David Anderson  
 Robin and Susan Cooper  
 Polly H. Hix and Tony J. Fair  
 Dr. and Mrs. John C. Lechleiter  
 Myrta Pulliam  
 Clay and Amy Robbins  
 Robert and Lora Sandroni

#### Golden Eagle Society

\$2,500-\$4,999 annual cumulative giving  
 Dr. Rosanne Bonjouklian  
 Russell Breeden and  
 Katharine A. Walker  
 Lori Efrogymson-Aguilera and Sergio Aguilera  
 Chris Katterjohn and Dona Siebler  
 Susie and Howard Maxwell  
 Mr. and Mrs. Terry Rader  
 Kevina and A.H. "Hutch" Schumaker, II  
 John Vanausdall  
 Jack and Sue Zinser

#### Eagle Society

\$1,500-\$2,499  
 Anonymous  
 Wilma Borinstein  
 Georgia Buchanan  
 Carl and Gayle Cox  
 Susie M. Cross  
 LaMarr Easter and Cary Neeley  
 Drs. Richard and Becky Feldman  
 Fred and Angie Green  
 Gloria Griesinger  
 Richard Hailey and Mary Beth Ramey  
 James and Lisa Harkness  
 Benny and Vicky Ko  
 Tom and Betsy Laskey  
 Nataly and Jonathan Lowder  
 Dr. Daniel H. Mowrey  
 Mr. and Mrs. Stephen Nash  
 Kent and Judy Newton  
 Ralph G. Nowak  
 Tara and Marc Sciscoe  
 J. Albert and Maribeth Smith  
 Barbara West  
 Jan Woodruff and William T. Rice

**Advocate Members**

\$1,000–\$1,499  
Jerry and Rosie Semler

**Patron Members**

\$500–\$999  
Dr. Walter and Joan Able  
Dick and Kathi Badertscher  
Mauvene Borton  
Robert Cirillo  
Nancy and Robert Davis  
John and Mary Ann Grogan  
James and Lisa Harkness  
Elizabeth and J.A. Lacy  
David and Virginia Mullins  
Georgianne Neal

**Sustaining Members**

\$250–\$499  
John E. Burns, III  
Lee and JoAnn Coleman  
Joe and Eleanor Columbe  
Jim Dillard  
Marni Fechtman  
Dr. and Mrs. Stephen W. Fess  
Jennifer Frechette  
Dr. and Mrs. Robert E. Gould  
Cindy and Robert Hoyer  
Meredith and Kathleen Hull  
Linda and Marvin Maguire  
Christina Morris  
Theodore Popowchak  
William K. Ransom  
Chris Reading and Juliet Port

Dr. John Cole and Rose Schnell-Cole  
William L. Scott  
Jack and Barbara Simon  
Margaret Wiley  
Ms. Gretchen Wolfram  
David and Magdalen Zauner

**Contributing Members**

\$150–\$249  
Mr. C. Willis Adams, III  
Mona Billingsley  
Scott and Maryann Bridge  
Mark Brown and Polly Muckenfuss-Brown  
Lee and Patricia Casebere  
Diane Claffey  
Stephanie Clark  
Charles Costa and Tonicia Smith  
Carl and Janice Wheeler-Cowen  
William and Susan Ertel  
Michael and Rhonda Fasig  
David and Gisele Found  
Curt and Diane Fuhrmann  
Colleen Gallaway  
Tom and Susie Hacker  
Ronald and Judith Hagan  
Jay and Mary Ham  
Mr. Neil Handley  
Jeffrey and Julia Havens  
Judy E. Horst  
Dr. Roger Hurwitz  
Nancy and Thomas Inui  
Barbara Irwin-Herman and Erv Herman

John and Frances Jacobs  
Pam and Gary Jursik  
John Karraker  
James Kirkley  
Fredrick and Carol Lane  
Rebecca Lomax-Sumner and John Sumner  
Lori Long  
Barrett and Akemi Madrigal  
Zygmunt and Karen Mazanowski  
Graham and Julie Milldrum  
Mr. and Mrs. Robert E. Moore, Jr.  
Millicent Moyer  
Carolyn and Gary Mueller  
New Hope of Indiana  
John and Gail Paul  
Patricia Pelizzari  
Nancy Peterson and Dennis Drews  
Joel and Karen Piassick  
Margaret Drew and Craig Pinkus  
Robert H. Reynolds  
Tim and Linda Robb  
Arthur Rosen  
Kenneth and Siobhan Schafer  
Sandy and Mike Schipp  
Michael and Kathleen Schneider  
Mr. Douglas Snow and Mr. Thomas Lerdal  
Gerry and Karen Stillions  
Brian West  
Gerry and Kim Wichman

**Donors**

All memorial and honorarium gifts are listed. Gifts in other categories are for \$100 or more.

**Annual Fund and other designated gifts**

David and Mary Allen  
Amy and Michael Alley  
Dr. Caryn C. Anderson and Mr. David Anderson  
Anonymous (6)  
James A. Baldwin  
Mr. and Mrs. Robert R. Baxter  
Elizabeth Blanchard  
Linda Bolden-Smith  
Patricia and Stuart Breslin  
Barbara J. Briggs  
Tom and Angie Bromstrup  
Carolyn Burkley  
Jo Ann Caito  
Howard and Karen Campbell  
Phyllis Cockerill  
Jack Colby  
Pat Cracraft  
Dance Kaleidoscope  
Angie and Dick Darlington  
Phillip E. Darrah  
Larry Davis  
The Larry and Cherri Dawson Charitable Fund, a fund of the Indianapolis Foundation  
John C. DePrez, Jr. and Lee Marks

## Attention Businesspeople: Eiteljorg corporate partnerships help companies reach new audiences

During the pandemic, businesses in our community have endured enormous challenges, sometimes closing their locations to in-person customers and shifting their operations to serve clients remotely. Promoting a company and its services is challenging when the usual ways of reaching customers are disrupted.

Many readers of *Storyteller* magazine are businesspeople who live in Indianapolis, Hamilton County or surrounding counties, and manage or work for companies in those communities. And we know many Eiteljorg Museum supporters are civic-minded, resourceful and love the arts.

Are you a businessperson or an employee at a company that is trying to rebuild its pre-pandemic level of business and re-establish its audience? If so, did you know that the Eiteljorg offers various types of partnership opportunities for businesses? When a company's name and brand is associated with a museum exhibition or program, it can be amplified to the museum's own loyal audiences – often grandparents and empty nesters – who make thoughtful decisions about their time, money and purchases.

We have sponsorships available at the Eiteljorg at various levels for corporations and companies large and small. Beyond being a philanthropic gift, a sponsorship with the Eiteljorg can be part of a marketing strategy. Museum exhibitions and public programs emphasize cultural diversity and educate about societal issues. A sponsorship can help raise a company's visibility among the museum's supporters and the community.

Sponsorships and corporate memberships are mutually beneficial. Some companies have their name or logo placed prominently on exhibit signage or museum marketing materials. Others are interested in opportunities to entertain clients at exhibit-opening receptions and other museum events.

Still other companies want to share the museum experience with their employees and provide opportunities to experience the arts in Indianapolis. One law firm as part of its partnership recently arranged for a curator-led gallery tour at the Eiteljorg. The museum can tailor plans to suit your company's needs.

You might not work in the marketing and advertising department of your company, but you probably know a colleague who does and who makes those kinds of decisions. Please share this copy of *Storyteller* magazine with them. The Eiteljorg Museum's corporate relations manager, Susan St. Angelo, can discuss corporate sponsorship and membership options that will heighten visibility and raise awareness of your business among the Eiteljorg's loyal fans. You can contact Susan at 317.275.1333 or [sstangelo@eiteljorg.com](mailto:ssstangelo@eiteljorg.com).



Fifth Third Bank was presenting sponsor of *Jingle Rails: The Great Western Adventure*. The bank's logo appeared on a model train and its downtown Indianapolis building (left) was represented in miniature in the display.

Federico and Rosa Maria Dies  
 Michael and LouAnn Eagle  
 L.G. and Alyce Edwards  
 Bill and Jennie Forehand  
 Tom and Sharon Funk  
 Julia and Richard George  
 Dr. and Mrs. Richard L. Gilmore  
 Betsey Harvey  
 Jo Ann and Nicholas Hatfield  
 Hunter and Glenna Heath  
 Eric and Pamela Hinkle  
 Pam and Gary Jursik  
 Larry and Connie Kane  
 Chris Katterjohn and Dona Siebler  
 Kay F. Koch  
 Mary and John Kooi  
 Lezlie Laxton  
 Carla and Mike Leppert  
 John and Mary Lisher  
 John and Laura Ludwig  
 Linda and Marvin Maguire  
 Steve and Jane Marmon  
 Clara Martin  
 Michael and Janie Maurer  
 Darby McCarty  
 James and Kathleen McGrath  
 Sarah Meadows  
 Elaine Moon  
 Martha and Alfred Mosemiller  
 Carolyn and Gary Mueller  
 Col. James Mutter and  
 General Carol Mutter  
 Timothy S. Needler  
 Dorit Paul  
 Noreen and Alan Poorman  
 Mr. Hilary Raab, Jr.  
 Marjorie and Victor Riemschneider  
 Mary Anne and Randy Robertson  
 Thomas and Linda Sands  
 Jerry and Rosie Semler  
 Larry and Rita Steinberg  
 Dr. and Mrs. Thomas Taylor  
 The Saltsburg Fund: Donald W. Buttrey  
 and Ann Hyer Buttrey  
 Vicki and Sara Townsend  
 Cathy Turner  
 Vision Communities, Inc.: Lindsey and  
 David Flaherty  
 Philip and Shandon Whistler  
 Gerry and Kim Wichman  
 John and Janice Williams  
 Mr. and Mrs. Stephen D. Zimmerman  
 Robina M. Zink  
 Jack and Sue Zinser

#### Gifts in Honor and Memory

*In Honor of Mary Beth Braitman*  
 L.G. and Alyce Edwards  
 Walter Fitzsimmons and  
 Yvonne Dutton  
 Mr. and Mrs. Thomas E. Reilly, Jr.  
*In Honor of Our Aunt Eileen*  
 Kayla Dawson  
*In Honor of Eiteljorg Employees*  
 John Vanausdall  
*In Honor of the Fantastic Development*  
*Team at the Eiteljorg Museum*  
 Sarah and Evan Farthing  
*In Honor of John Vanausdall*  
 Renata R. Harris  
 David and Donna Sease  
*In Memory of Bryant Bechtold*  
 John Vanausdall  
*In Memory of Jan Eason*  
 Harriett Cole

#### Foundation, corporation and government gifts

\$250,000 and above  
 Avis Foundation, Inc.  
 \$50,000-\$249,999  
 Arts Midwest  
 Indiana Arts Commission  
 \$10,000-\$49,999  
 Arts Council and the City of Indianapolis  
 OneAmerica  
 Katz, Sapper & Miller, LLP  
 Netherleigh Fund, a Central Indiana  
 Community Foundation Fund  
 \$5,000-\$9,999  
 Wilhelm Construction Co.  
 Indianapolis Chamber of Commerce  
 \$2,500-\$4,999  
 Boot Barn  
 Faegre Drinker Biddle & Reath LLP  
 (Faegre Drinker)  
 \$500-\$1,499  
 Bockley Brothers Family Fund of The  
 Minneapolis Foundation

#### Matching gift companies

Eli Lilly and Company Foundation, Inc.  
 IBM Corporation Matching Grants  
 Program

#### Gifts in kind

Art Value, LLC  
 Faegre Drinker Biddle & Reath LLP  
 (Faegre Drinker)  
 Honeymoon Image & Design  
 Indianapolis Library Foundation  
 Stuart's Household Furniture Moving  
 and Storage, Inc.

#### Endowment gifts and pledges

Anonymous  
 Estate of Art Schildbach

#### Project 2021 capital campaign

Steve Cagle  
 Jasmin French  
 Karen and Joseph Glaser  
 Virginia Merkel

#### Thanks to Eiteljorg volunteers who recently served during *Jingle Rails: The Great Western Adventure*:

Jeffrey Anderson  
 Colleen Bailie  
 Mike Baumgartner  
 Don Bievenour  
 Gabriella Borbas  
 Dan Bradford  
 Tom Bromstrup  
 Carolyn Burkley  
 Richard Clapp  
 Kevin Cloer  
 Joanne Dankert  
 Phil Dant  
 Mike Davis  
 Carolyn Fisher  
 Bill Forehand  
 Douglas Hale  
 Bud Moore  
 Bill Poor  
 Bob Shula  
 Mary Sifferlen  
 Linda Sillery  
 Robert Sillery  
 Pam West

## Dr. Scott Shoemaker, curator and Miami culture bearer, served the Eiteljorg in many roles



Few people have made such an important impact on the mission of the Eiteljorg Museum as Scott Shoemaker, Ph.D.

A citizen of the Miami Tribe of Oklahoma, Shoemaker for the past six years served as the museum's curator of Native American art, history and culture — a position endowed by a gift from Thomas G. and Susan C. Hoback. In that role Shoemaker curated important exhibitions of Native American art, including those of Hopi carvings and woven baskets of numerous cultures across North America. He developed collections, cultivated relationships with collectors and donors, and consulted with Native nations about the museum's exhibitions of their artworks and cultural objects.

But Scott's connection to the Eiteljorg dates back more than 23 years, when as a young artist and culture bearer for the Miami Nation, he served as an artist in residence, educating visitors about the beautiful traditional Miami ribbonwork he creates. With his background in the study and recovery of the Miami language, Scott was a key member of the team that developed the ongoing exhibition *Mihtohtseenionki: The People's Place* that opened in 2002. Featuring art and cultural items of the Miami, Potawatomi and Delaware tribes, the exhibit traces their histories in Indiana.

As curator, Dr. Shoemaker has been deeply involved in planning the upcoming redesign and reinstallation of the museum's Native American galleries, scheduled for 2022. It will include a focus on the Indigenous peoples of the Great Lakes region, highlighting outstanding objects from the Richard Pohrt Jr. collection, an acquisition Shoemaker helped arrange in 2019. In many settings, Shoemaker educated the public about Native peoples who are the original inhabitants of Indiana and whose cultures are vibrant today.

In light of all of Shoemaker's contributions, the Eiteljorg staff and board were sorry to see him leave in December but excited for his new opportunity. His new role is with Margaret A. Cargill Philanthropies, as program officer in Native arts and cultures, supporting Native artists and organizations centered upon the intergenerational transmission of knowledge around the arts. Scott and his family are moving to Minnesota, to be closer to family there.

"Working with Scott was a pleasure, and he is greatly missed. A thoughtful advocate for recognition of the inequities of colonization and past representations of Native American history, Scott was also generous in sharing his knowledge of Miami and Great Lakes region art, history and cultures, and I learned a lot from him," said Elisa G. Phelps, Eiteljorg vice president and chief curatorial officer.

Though he has now moved on from the Eiteljorg, Dr. Shoemaker will continue to consult with the museum on the gallery reinstallation. The Eiteljorg congratulates Scott Shoemaker on his new role and thanks him for his insight, creativity and dedication.

## Hyacinth Rucker managed website, social media and online efforts

Digital marketing is as important as ever for the Eiteljorg in reaching the museum's audiences — visitors, members and supporters — about exhibitions, programs and events. Hyacinth Rucker has been instrumental in that ever-evolving process.

During seven-and-a-half years with the museum's marketing and communications department, most recently as digital marketing manager, Hyacinth was in charge of managing the Eiteljorg's social media platforms, as well as creating and distributing its weekly e-newsletter to members and general subscribers.

In 2018, Hyacinth led a project to upgrade the website **Eiteljorg.org** to make it more navigable, aesthetically appealing and user-friendly on mobile devices. She also led the redesign of a related webpage, **quest.eiteljorg.org** and created a new website, **contemporaryartfellowship.eiteljorg.org**. During the 2020 temporary shutdown, she led creation of the **EiteljorgAtHome** online content with the help of the museum's digital task force, which she chaired. In 2020, thanks to Hyacinth's efforts, Eiteljorg.org won the Award of Honor for best website from the Public Relations Society of America — Hoosier Chapter.

A graduate of University of Missouri-Columbia with a degree in broadcast journalism, Hyacinth also cultivated the Eiteljorg's relationships with social media influencers. In January, Hyacinth left the museum to focus on her husband of 14 years and their three boys. She has been an enthusiastic and outgoing colleague whose contributions to the museum will be long remembered.



## Cassandra Sanborn led membership initiative

Eiteljorg members who joined the museum or upgraded their memberships during the past two-and-a-half years have interacted with Cassandra Sanborn. As the museum's membership/donor engagement manager, Cassandra expanded the membership base and worked with the Eagle Society, a highly involved group of Eiteljorg members. Cassandra created stewardship events for all to enjoy, and during the 2019-20 season of *Jingle Rails*, she led an effort that successfully recruited hundreds of new members.

With a background in pro bono legal services, Cassandra came to the museum each day with a positive attitude, professionalism, respect for her colleagues and a willingness to help anyone who needed it. In January, Cassandra left the Eiteljorg to join Exodus Refugee Immigration Inc. as director of development, and the museum wishes her all the best in this next step in her career.



## Board recognizes Caryn Anderson for inspiration, dedication and hard work

By Kay Hinds, development coordinator

Dr. Caryn Anderson recently received a framed medallion, an award for service, for serving as president of the museum's Western Art Society since 2013. A sustaining member of the Western Art Society and an Eagle Society member since 2006, Caryn also served as chairperson of the *Quest for the West*® Art Show and Sale for several years.



The Western Art Society is instrumental to the museum; the organization has helped the Eiteljorg acquire important works of Western American art and plays a key role in hosting the annual *Quest for the West*® Art Show and Sale.

Caryn's commitment of time and energy helped *Quest for the West*®, and the Western Art Society generate nearly \$15 million in art sales over the past 15 years. She recently stepped down as president of the Western Art Society, and her dedication and hard work were recognized by the Eiteljorg Board of Directors. Caryn remains an active member of the society and a museum supporter.

## Happy trails to Susan Lewis, who has managed museum's finances

By Lezlie Laxton, director of human resources

After nearly 23 years managing the Eiteljorg's finances, Susan M. Lewis, museum vice president and chief financial officer, will retire in mid-April 2021. Susan started at the museum in June 1998 and brought with her a set of skills with amazing attention to detail, CPA credentials and a passion for not only her position but also for the museum and its financial stability.



During her tenure, Susan tirelessly worked to create and maintain annual budgets and has been the liaison with the museum's finance, investment, human resource councils as well as the museum's endowment and bond committees. She has been instrumental in keeping the museum's finances accurate and controlled for many years. During the difficult spring of 2020, she moved decisively to speedily apply for grant opportunities for the museum. Her husband, Mike, is a regular Eiteljorg volunteer.

In 2009, Susan Lewis was an honoree for the *Indianapolis Business Journal* CFO of the year and was commended for her dedication and oversight of all areas of the museum's finances. In addition to the accounting department, Susan also oversees human resources and technology departments, leading with consistency and support.

The Eiteljorg wishes Susan Lewis a happy retirement.

# Eiteljorg Museum of American Indians and Western Art

White River State Park • 500 W. Washington St.  
Indianapolis, IN 46204  
[www.eiteljorg.org](http://www.eiteljorg.org)

## COMING IN THE JUNE ISSUE



### VIRTUAL INDIAN MARKET & FESTIVAL JUNE

The 29th annual Eiteljorg Museum Indian Market and Festival, one of the nation's top Native American art markets, is going virtual in 2021. The virtual market will run for two weeks in June and feature Native American artists from across the United States and Canada. There will of course be, first and foremost, *shopping!* Please check our website [Eiteljorg.org/IndianMarketandFestival](http://Eiteljorg.org/IndianMarketandFestival) for all the details. The Virtual Indian Market and Festival also will include performances such as Native American dance, music, cultural presentations and art-making demonstrations.



Mark Kelso  
*Tearin' It Up*, 2020  
Oil on panel  
36 x 48 inches  
2020 *Quest for the West*® Harrison Eiteljorg Purchase Award



Wes Studi (Cherokee)  
Image courtesy of Jen Boyer

### 16TH ANNUAL QUEST FOR THE WEST® ART SHOW AND SALE OPENING WEEKEND SEP 10 & 11 EXHIBIT OPEN SEP 12-OCT 10

Beautiful paintings and sculptures – along with miniature works – by 50 top Western American artists will be available for purchase during the Eiteljorg's exciting weekend art sale. Academy Award-winning actor Wes Studi (Cherokee) is the scheduled special guest speaker. Don't miss the monthlong exhibition of *Quest for the West*® art, plus a related exhibition showcasing the previous 15 years' winners of the Harrison Eiteljorg Purchase Prize, which are now part of the Eiteljorg collection. For reservations, contact Kay Hinds at [khinds@eiteljorg.com](mailto:khinds@eiteljorg.com) or 317.275.1341.

Sponsorships for Eiteljorg exhibitions and programs are available. Contact Susan St. Angelo at 317.275.1333 or [sstangelo@eiteljorg.com](mailto:ssstangelo@eiteljorg.com).

*Honoring Women*



Stay connected with the Eiteljorg on social media and at [eiteljorg.org](http://eiteljorg.org). You can also sign up for our weekly e-newsletter at [eiteljorg.org](http://eiteljorg.org).

For general information about the Eiteljorg Museum, call **317.636.9378**.

